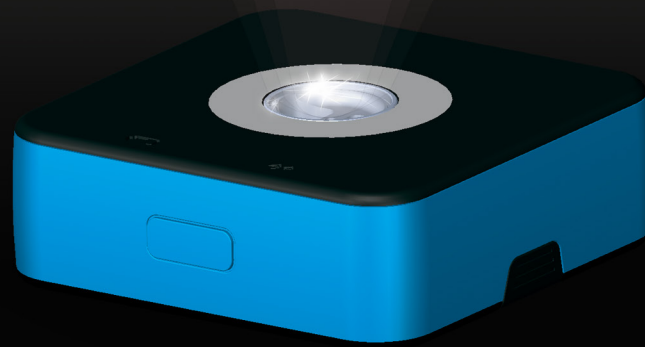


HOLD THE FUTURE IN YOUR HANDS



NIRONE DEVICE

Wireless, powerful, portable
NIR spectral sensor for measurement applications

START YOUR SENSING REVOLUTION

NIRONE Device provides a complete portable material sensing solution for OEM developers

The heart of the solution is our NIRONE Sensor with added mobility and smart connectivity. The battery-powered NIRONE Device has Smart Bluetooth (BLE) connectivity enabling communication with portable devices such as mobile phones and tablets.

NIRONE Device includes both a mobile app and our SensorControl Software for PC's. It is easy to start measurements in the laboratory with a computer, and to build your own mobile user interfaces after laboratory measurements.

Key Features

- Fast measurement (typically in seconds)
- 1000 measurements on a single charge
- Bluetooth connectivity
- Easy mobile app for showing spectral data
- SDK availability for own user interface development

NIRONE Device enables fast application development

NIRONE Device is designed to shorten the time required for successful application development. Data collection is easy to start by using a PC or an mobile device. The NIRONE Device App makes it possible to collect data with multiple sensors in the field and build a reference library with real samples in actual environments.

Our software development kit (SDK) gives an opportunity to control the Device and develop your own user interface for mobile phones or tablets.

In addition, our Developers' Portal includes instructions on how to get started and all technical descriptions for NIRONE connectivity interfaces. It also contains the NIRONE Device App source code.

Don't hesitate to contact us, if you'd like to know more. NIRONE Device brings the mobility for next generation material scanners.



Device SDK Package

- SDK guide for software development quick start
- Android & iOS example source code



SensorControl PC application

- Control of a single device
- Reference measurements



Modularity

- Easy application development platform
- Programmable for multiple applications



Device Mobile App (Android)

- Mobile app for multiple device operation
- Easy-to-use user interface



Ready-to-use device

- Battery-operated
- Robust IP54 level housing



Smart connectivity

- IoT compatible
- Bluetooth Low Energy (BLE) and USB